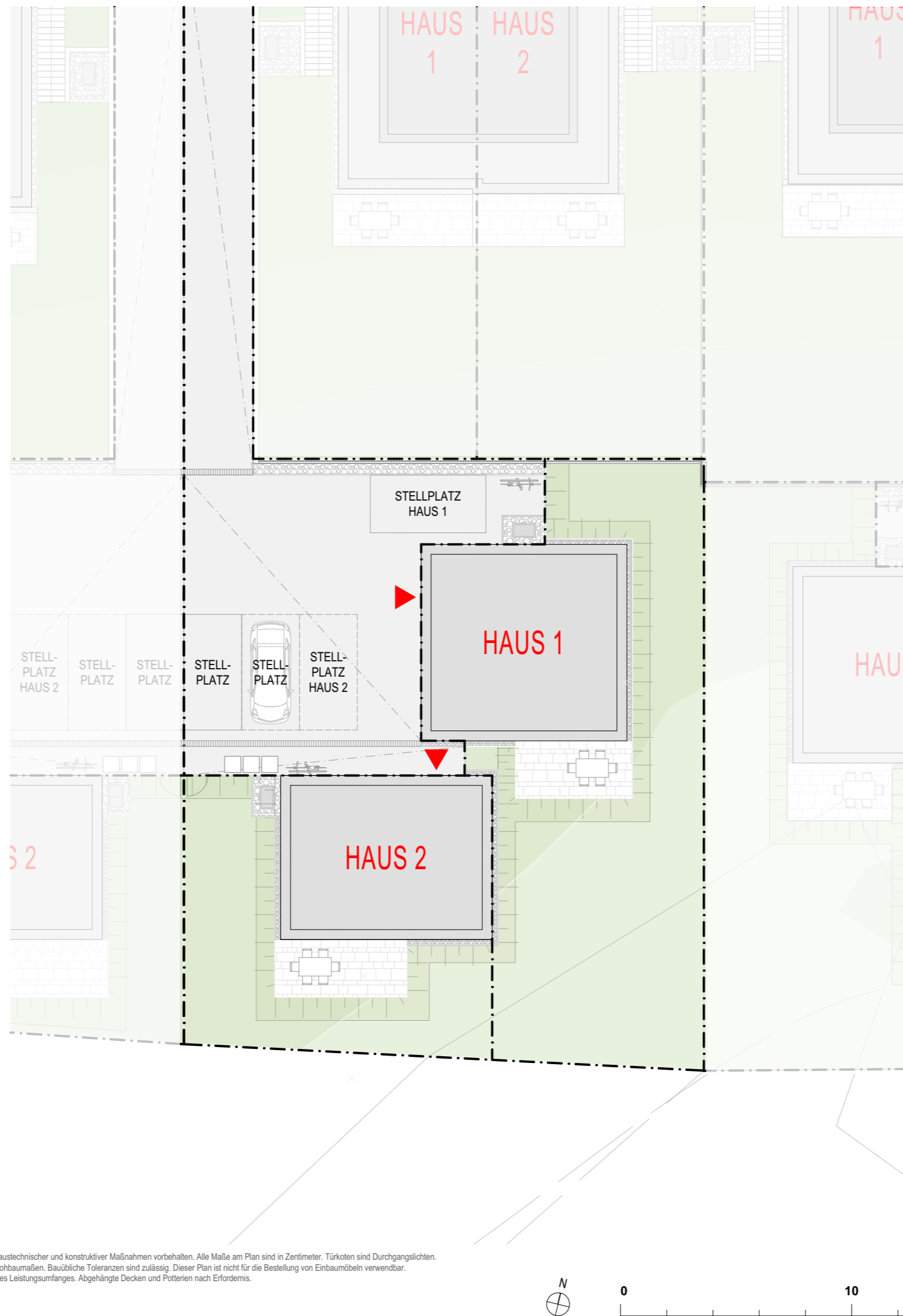
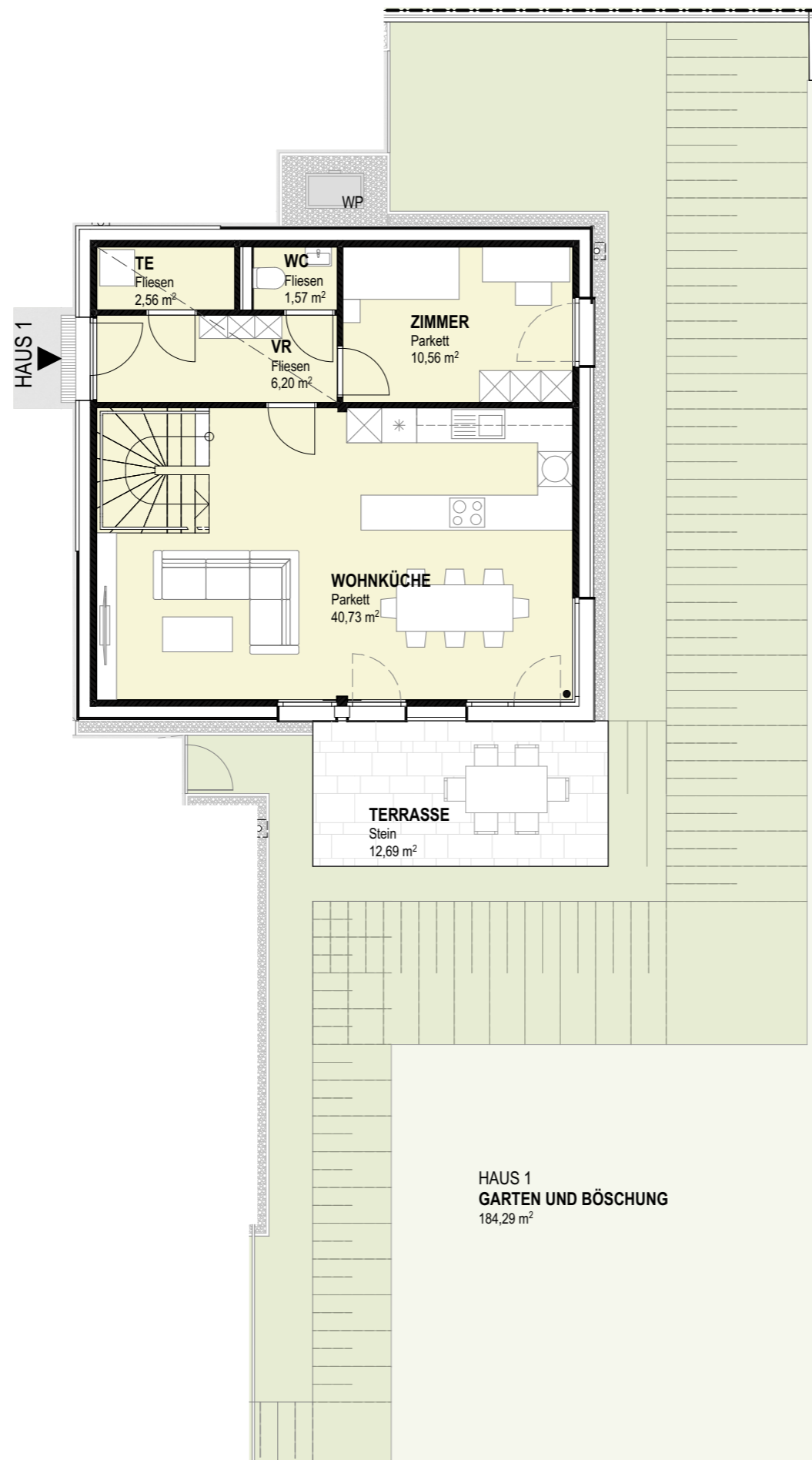


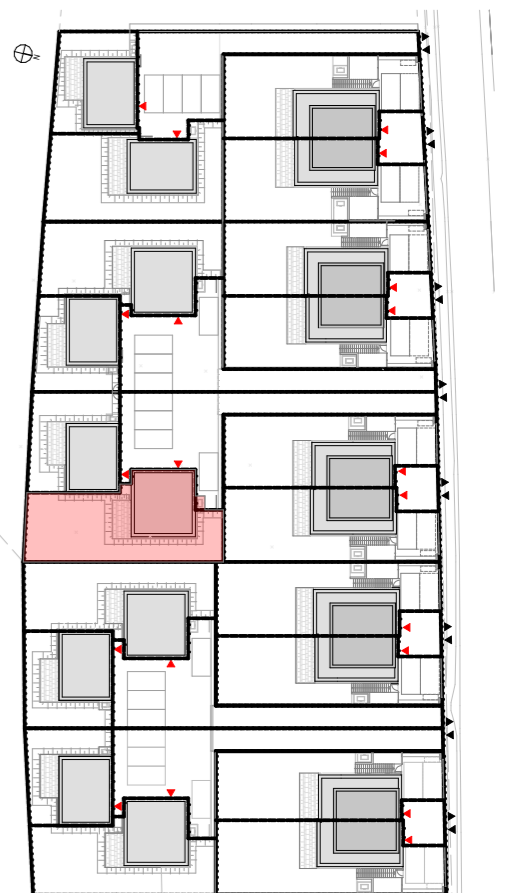
HINTERSDORFER STRASSE 31H  
LAGEPLAN



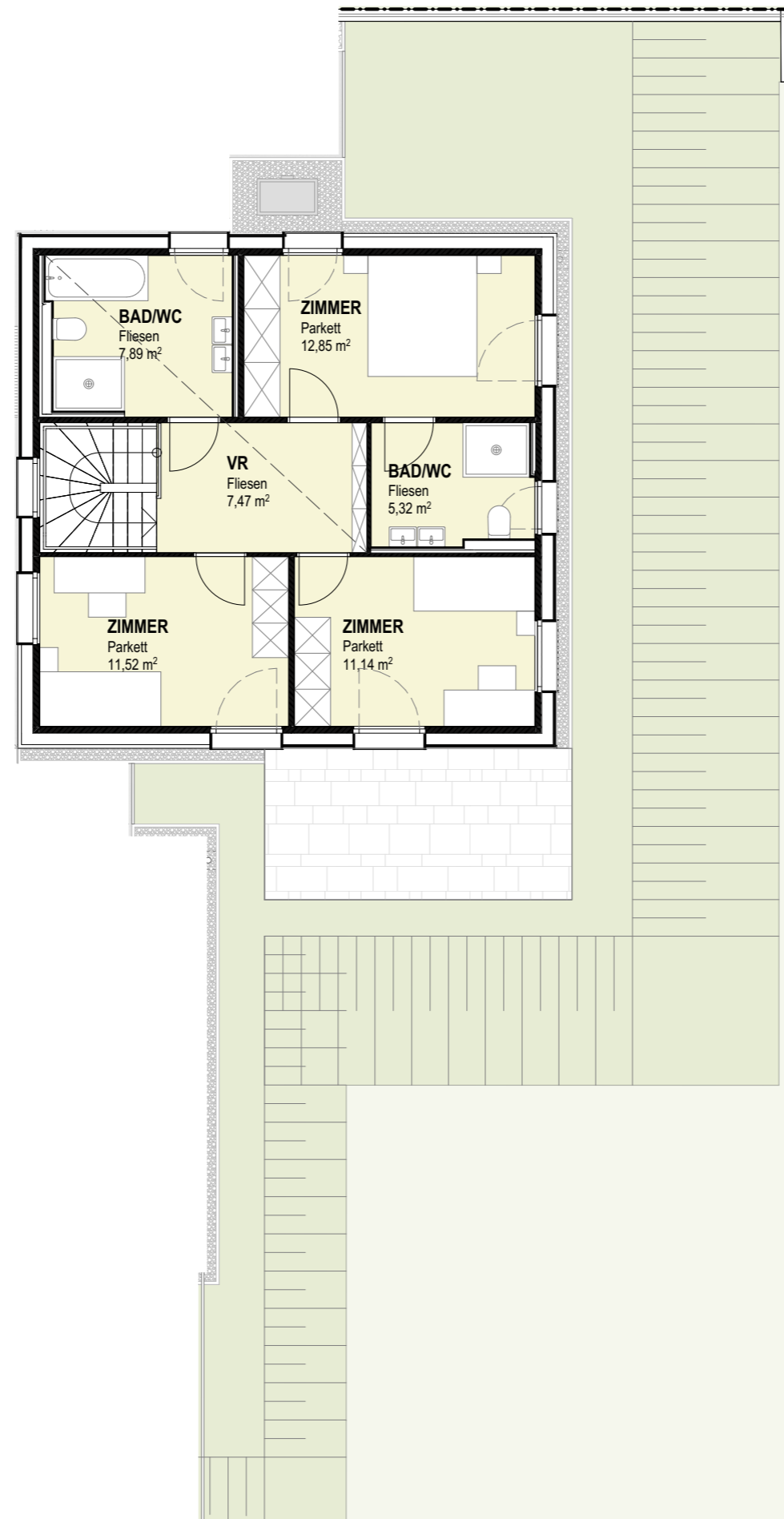
**HINTERSDORFER STRASSE 31H  
HAUS 1  
GRUNDRISS EG**



WOHNNUTZFLÄCHE	117,81 m <sup>2</sup>
TERRASSE	12,69 m <sup>2</sup>
STELLPLATZ	25,00 m <sup>2</sup>
EIGENGARTEN	184,29 m <sup>2</sup>



**HINTERSDORFER STRASSE 31H  
HAUS 1  
GRUNDRISS 1.OG**



WOHNNUTZFLÄCHE	117,81 m <sup>2</sup>
TERRASSE	12,69 m <sup>2</sup>
STELLPLATZ	25,00 m <sup>2</sup>
EIGENGARTEN	184,29 m <sup>2</sup>

