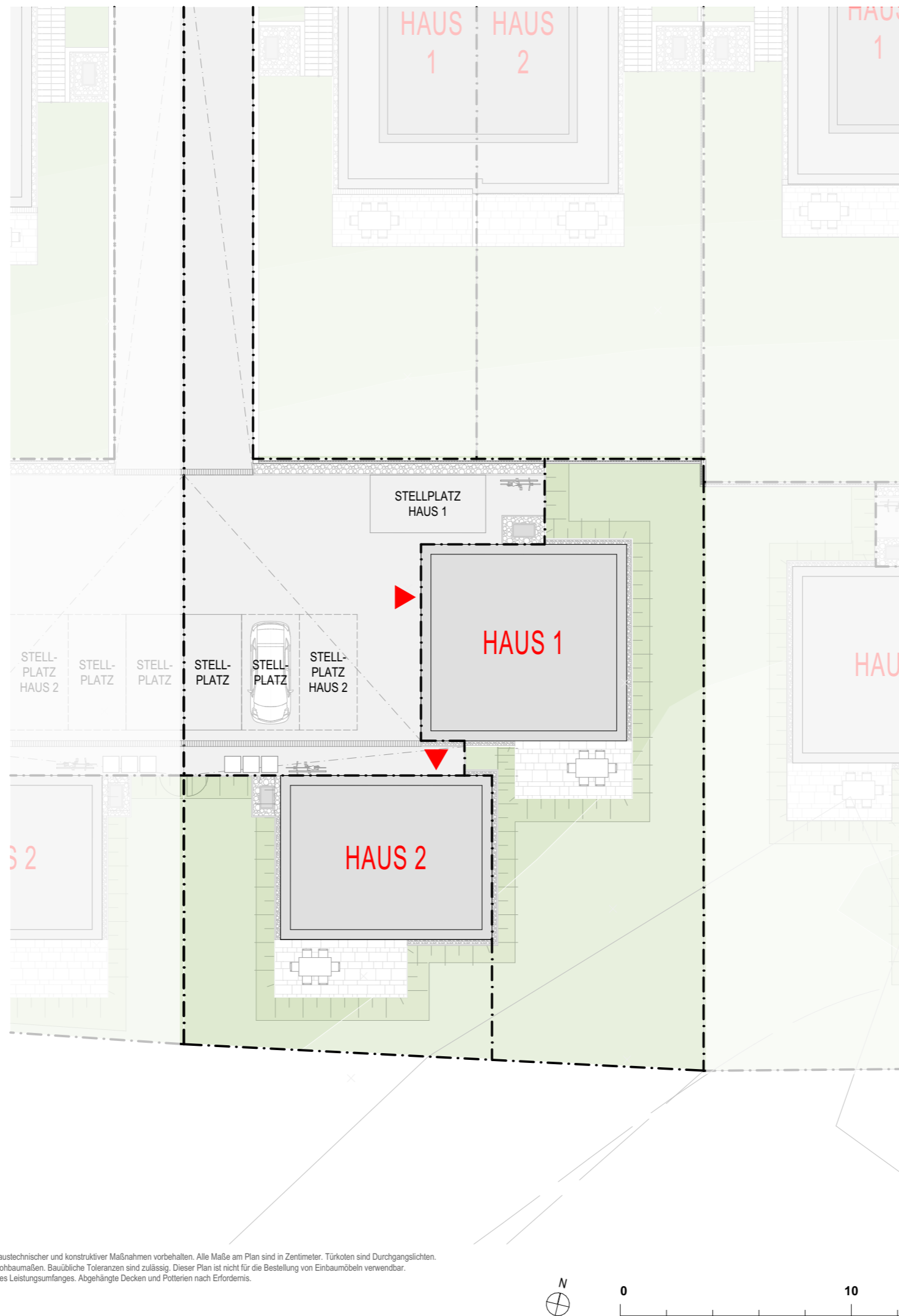
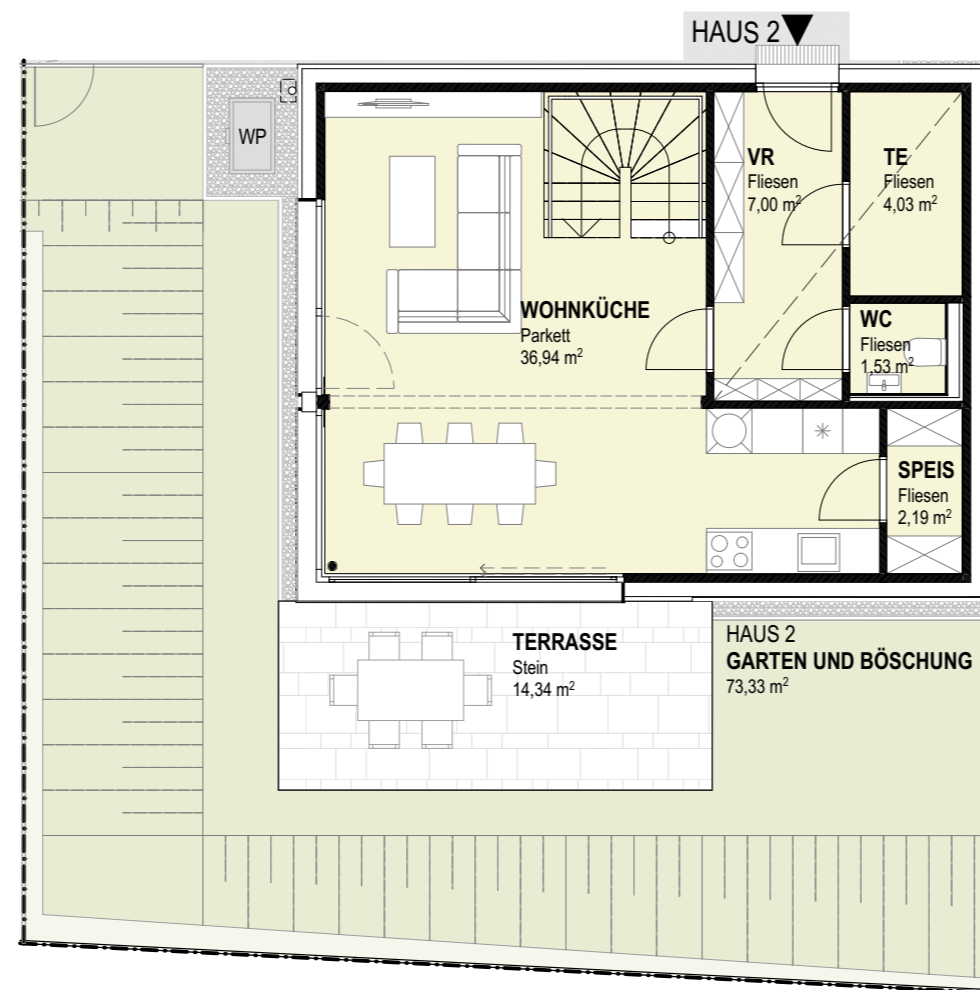


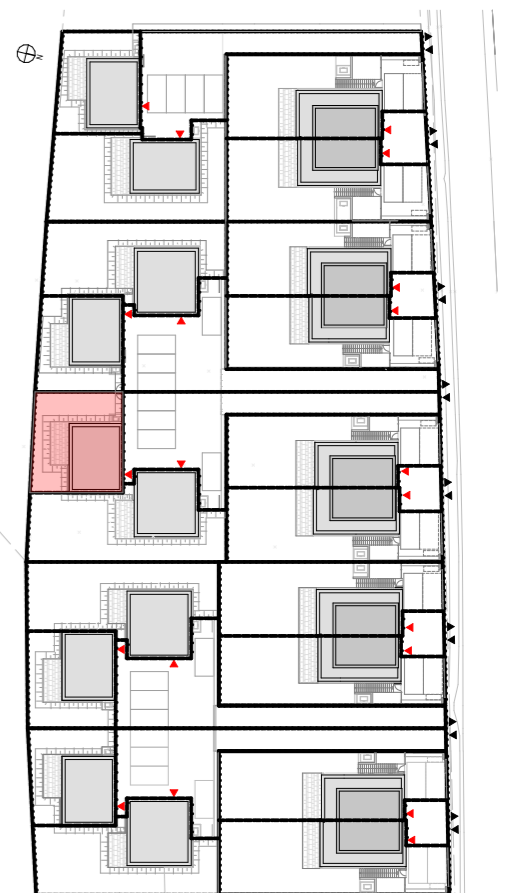
**HINTERSDORFER STRASSE 31H
LAGEPLAN**



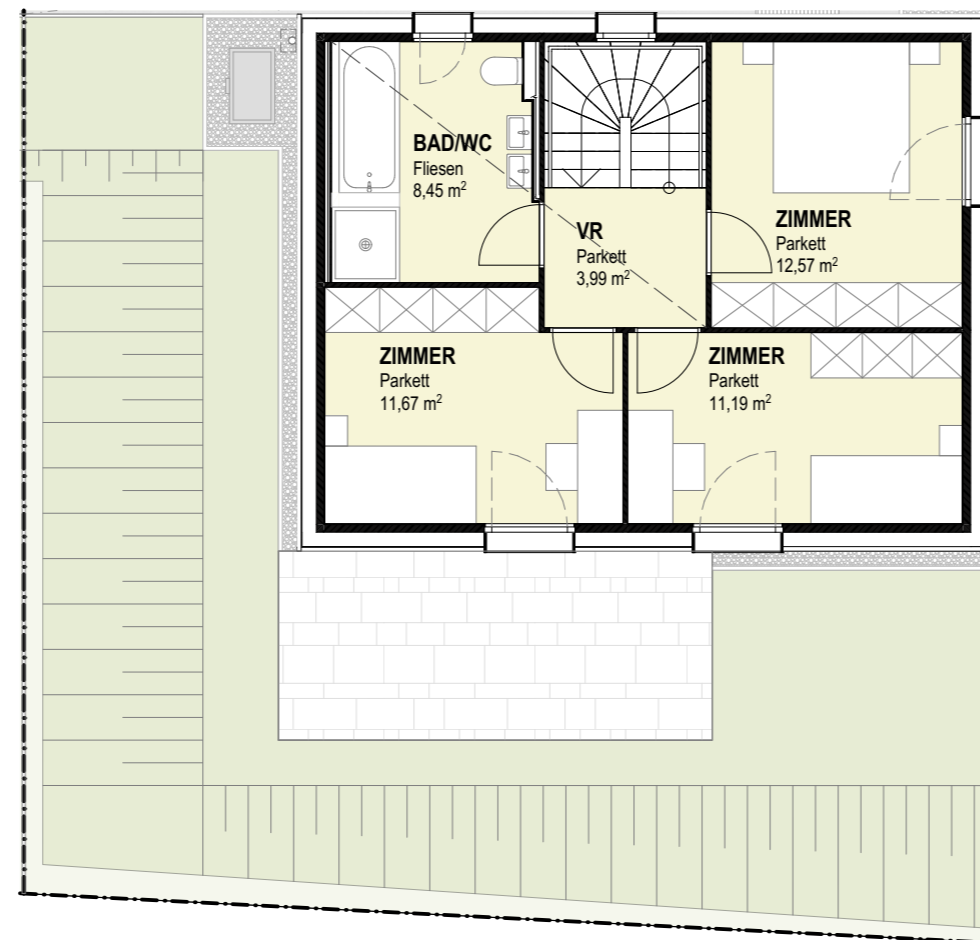
**HINTERSDORFER STRASSE 31H
HAUS 2
GRUNDRISS EG**



WOHNNUTZFLÄCHE	99,56 m ²
TERRASSE	14,34 m ²
STELLPLATZ	25,00 m ²
EIGENGARTEN	73,33 m ²



**HINTERSDORFER STRASSE 31H
HAUS 2
GRUNDRISS 1.OG**



WOHNNUTZFLÄCHE	99,56 m ²
TERRASSE	14,34 m ²
STELLPLATZ	25,00 m ²
EIGENGARTEN	73,33 m ²

